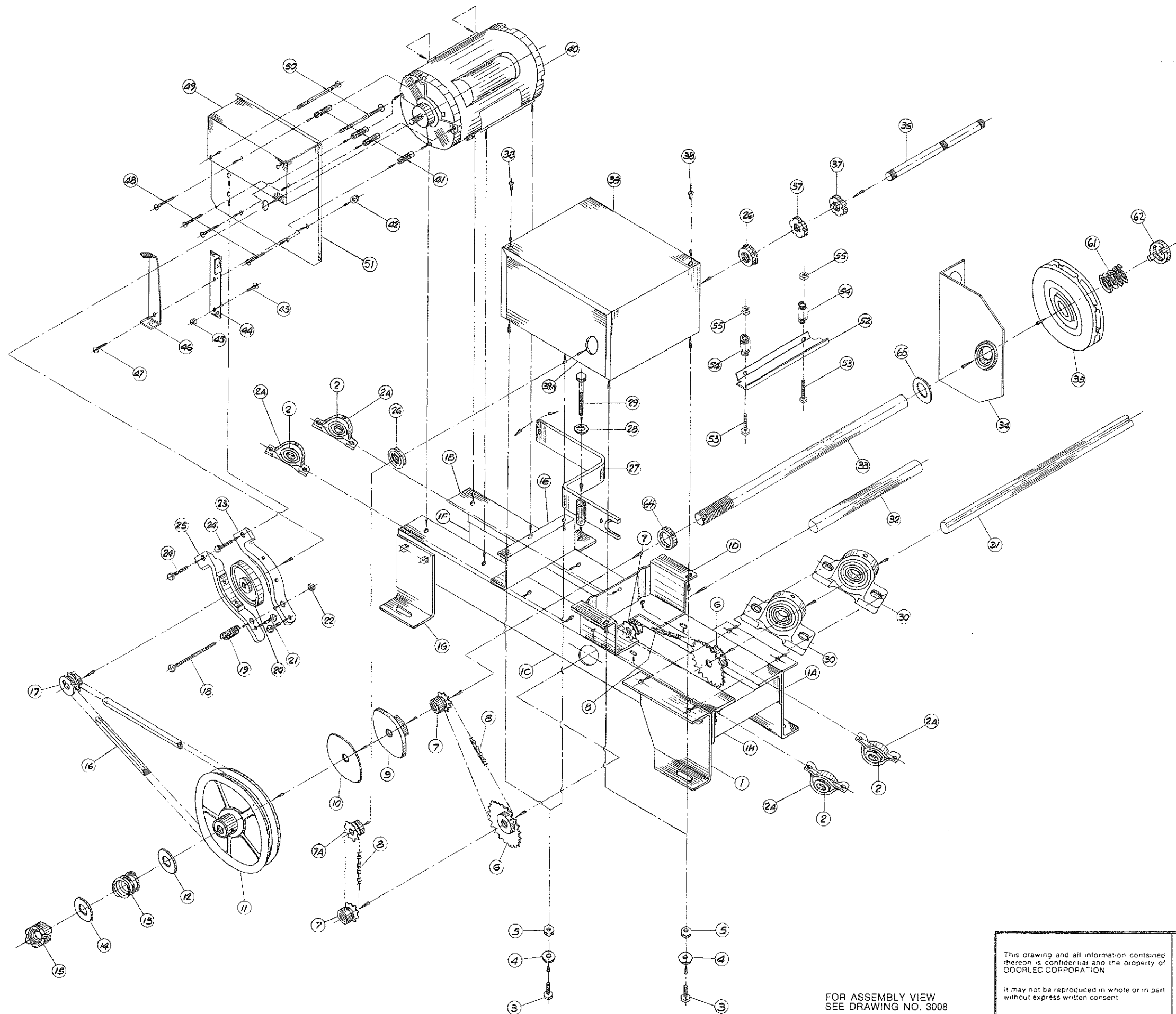


**PARTS LIST**  
**MODEL EHJ**  
 Drawing no 1057 A  
**MECHANICAL**



PART NO.	DRAWING NO.	NO.	DESCRIPTION
1	1057 A	14407	Leg, front right
1A	1057 A	14404	Leg, front left
1B	1057 A	23104	Frame angle 27" (68.5 cm), left
1C	1057 A	23106	Frame angle 27" (68.5 cm), right
1D	1057 A	42208	"Z" Bracket, control cabinet support - front
1E	1057 A	23105	"U" Bracket, control cabinet support - rear
1F	1057 A	14408	Leg, rear left
1G	1057 A	14403	Leg, rear right
1H	1057 A	14216	Frame Front Brace EHJ
2	1057 A	28301	Bearing insert, pillow block ASPP-205 1" (2.5 cm) bore
2A	1057 A	42413	Pillow block bearing housing GP-3 set
3	1057 A	11269	Cap screw, hex 1/4" x 1/2"
4	1057 A	11379	Washer, flat 1/4" (.63 cm)
5	1057 A	11811	Nut 1/4" (.63 cm) - 20
6	1057 A	31103	Sprocket 41B36 - 1" (2.5 cm) bore KW/SS
7	1057 A	31117	Sprocket 41B12 - 1" (2.5 cm) bore KW/SS
7A	1057 A	31118	Sprocket 41B12 - 3/8" (1.59 cm) bore KW/SS
8	1057 A	24041	Roller chain RC41
8A	1057 A	24011	Connecting link #41 (not shown)
9	1057 A	12501	Clutch plate, aluminum 4" (10 cm) dia. x 1" (2.5 cm) bore
10	1057 A	12576	Clutch disc, asbestos 4" (10 cm) dia. x 1" (2.5 cm) bore
11	1057 A	34103	"V" Belt pulley 805 8" (20 cm) x 1" (2.5 cm) bore
12	1057 A	11251	Washer SAE 1" (2.5 cm) hole
13	1057 A	20108	Clutch spring - 1"
14	1057 A	11251	Washer SAE 1" (2.5 cm) hole
15	1057 A	11286	Nut, 1" (2.5 cm) - 8 castellated
16	1057 A	19052	"V" Belt 5L350
17	1057 A	34201	"V" Belt pulley MA20 3/8" (1.59 cm) bore
18	1057 A	11202	Cap screw 1/2" (.63 cm)-20 x 4" (10 cm) long
19	1057 A	20001	Brake spring
20	1057 A	12561	Brake drum 4" (10 cm) dia.
21	1057 A	11774	Cap screw 1/2" (.63 cm) - 20 x 1" (2.5 cm) (not shown)
22	1057 A	11280	Nut, 1/4" (.63 cm) - 20 nylon insert
23	1057 A	12562	Brake shoe, lower
24	1057 A	11261	Cap screw, hex 1/4" x 1 1/2" (.63 cm x 3.8 cm)
25	1057 A	12563	Brake shoe, upper
26	1057 A	28002	Flange bearing F-360-13 3/8" (1.59 cm) hole
27	1057 A	14122	Hoist Disconnect Arm
28	1057 A	11252	Washer, flat 3/8" (.94 cm)
29	1057 A	11264	Cap screw, hex 3/8" x 2 1/2" (.94 x 6.35 cm)
30	1057 A	26103	Pillow block bearing, cast iron 1" (2.5 cm) hole
31	1057 A	26110	Shaft, steel 16" (40 cm) x 1" (2.5 cm) dia. keyway
32	1057 A	26155	Shaft 8 1/2" x 1" (20.25 x 2.5 cm)
33	1057 A	26125	Shaft, threaded 1 7/8" x 1" (44.38 x 2.5 cm)
34	1057 A	28504	Chain guard 1"
35	1057 A	12513	Pocket wheel 1" Oilite
36	1057 A	26140	Cam shaft, threaded 3/8" (1.59 cm) - 24 x 10 1/2" (26.88 cm) long
37	1057 A	11801	Oilite cam, grooved 3/8" (1.59 cm) - 24 x 3/8" (9.5 mm) wide
38	1057 A	11099	Truss head Bolt 10-32 x 3/8"
39	1057 A	42402	Cover, control cabinet
39A	1057 A	42401	Base, control cabinet
40	1057 A		Electric motor (see name plate for H.P. and voltage)
41	1057 A	11832	Spacers, hex (when used)
42	1057 A	11280	Nut, 1/4" (.63 cm) - 20 nylon insert
43	1057 A	11198	Truss head bolt 1/4" - 20 x 3/4" (.63 cm - 20 x 1.9 cm)
44	1057 A	14212	Solenoid-brake lever, lower
45	1057 A	11280	Nut, 1/4" (.63 cm) - 20 nylon insert
46	1057 A	14211	Solenoid-brake lever, upper
47	1057 A	11198	Truss head bolt 1/2" - 20 x 3/4" (.63 cm - 20 x 1.9 cm)
48	1057 A	11290	Nut, hex 8 - 32
49	1057 A	30010	Cover, solenoid switch
50	1057 A	11231	Stove bolts 1/4" (.63 cm)-20 x 3 1/2" (8.75 cm)
51	1057 A	14213	Brake plate
52	1057 A	26117	Cam retainer plate
53	1057 A	11261	Cap screw, hex 1/4" x 1 1/2" (.63 cm x 3.8 cm)
54	1057 A	20111	Cam retainer plate springs
55	1057 A	11280	Nut, 1/4" (.63 cm) - 20 nylon insert
56	1057 A	11282	Nut, nylon insert No. 6 (not shown)
57	1057 A	11283	Nut No. 6 (not shown)
58	1057 A	11361	Lock washer #6 (not shown)
59	1057 A	11199	No. 6 Limit Switch Spacer (not shown)
60	1057 A	11201	Machine Bolt No. 6 x 2" (5 cm) (not shown)
61	1057 A	20109	Hoist spring EHJ
62	1057 A	12122	Pocket wheel coupling
63	1057 A	11091	Nut, fine 3/8"-24 for cam shaft (1.56 cm) (not shown)
64	1057 A	26080	Shaft collar - 1" (2.5 cm) hole
65	1057 A	11251	Washer SAE 1" (2.5 cm) hole

FOR ASSEMBLY VIEW  
 SEE DRAWING NO. 3008

This drawing and all information contained hereon is confidential and the property of DOORLEC CORPORATION.  It may not be reproduced in whole or in part without express written consent.	This document is loaned subject to be returned upon demand. It may not be used directly or indirectly for purposes detrimental to the interests of DOORLEC CORPORATION.  Copyright 1985 ALL RIGHTS RESERVED	<b>DOORLEC CORPORATION</b>		
		<b>MODEL EHJ</b> <b>EXPLODED VIEW</b>		
		Date: April 1987	Approved P.G.S.	Drwg. No. 1057 A