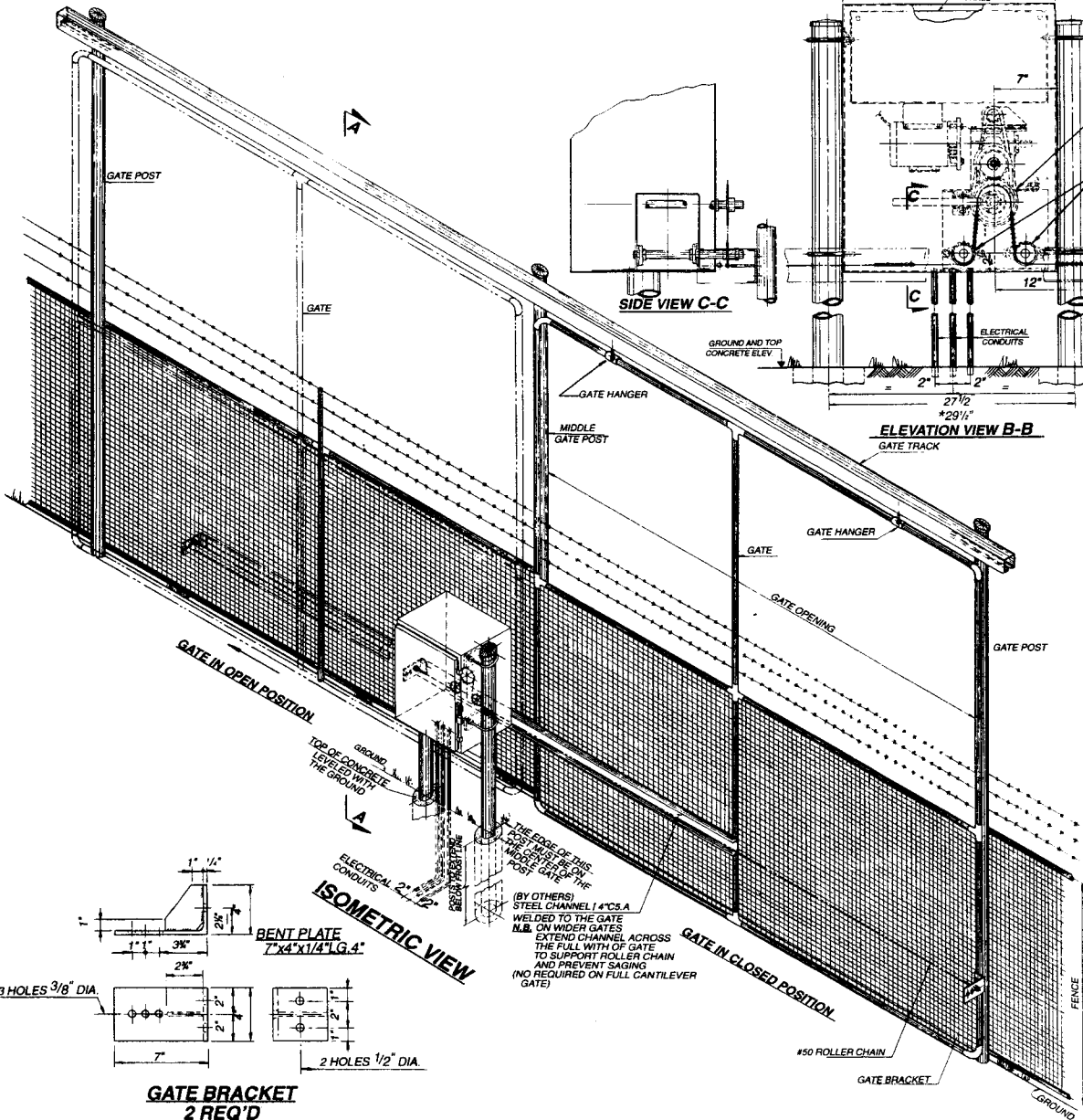


*These dimensions apply only when mounting channels are used



SIDE VIEW C-C

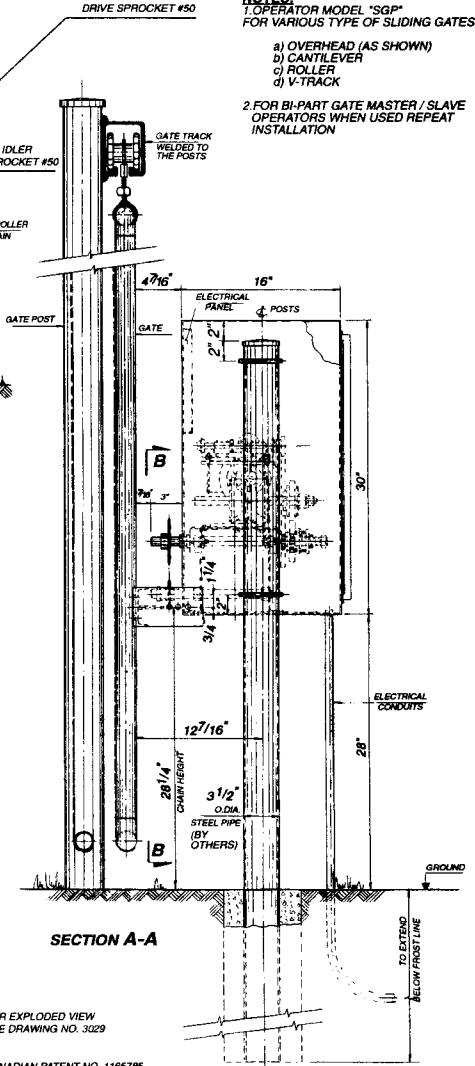
ELEVATION VIEW B-B

SECTION A-A

FOR EXPLODED VIEW
SEE DRAWING NO. 3029

CANADIAN PATENT NO. 1185785

- NOTES:**
1. OPERATOR MODEL "SGP"
FOR VARIOUS TYPE OF SLIDING GATES
- a) OVERHEAD (AS SHOWN)
 - b) CANTILEVER
 - c) ROLLER
 - d) V-TRACK
2. FOR BI-PART GATE MASTER / SLAVE
OPERATORS WHEN USED REPEAT
INSTALLATION



This drawing and all information contained thereon is confidential and the property of DOORLEC CORPORATION.
It may not be reproduced in whole or in part without express written consent.

This document is loaned subject to be returned upon demand. It may not be used directly or indirectly for purposes detrimental to the interest of DOORLEC CORPORATION.
Copyright 1994
ALL RIGHTS RESERVED.

DOORLEC	
MODEL SGP SUGGESTED INSTALLATION	
Date: 18-03-94	P.G.S. 3028